

Far East District Newsletter

Volume 2, Number 9 December 1991

Locurcio named POD commander

Col. (P) Ralph V. Locurcio has been selected as commander and division engineer of the Pacific Ocean Division, U.S. Army Corps of Engineers. He is scheduled to make an orientation visit here Jan. 22-28.

He presently commands the Corps' Kuwait Emergency Recovery Office, where he has served since April. Prior to his assignment in Kuwait, he commanded the Corps' Savannah District.

Locurcio has served in a variety of Corps assignments to include commander and district engineer of the Philadelphia District, assistant director of construction (civil works) in the Office of the Chief of Engineers, assistant area engineer in the Baltimore District, and executive assistant to the Board of Engineers for Rivers and Harbors. He was a director of engineering and housing in Germany, and has served in several troop assignments in Vietnam and Germany.

He is a 1965 graduate of the U.S. Military Academy at West Point. He obtained a Master of Science degree in civil engineering from Purdue University in 1972 and is a graduate of the Advanced Management program at the University of Pennsylvania, the U.S. Army War College, and the U.S. Army Command and General Staff College. Locurcio is a registered professional engineer in the commonwealth of Virginia.

He was born in December 1943 in New Jersey. The Locurcio's have three children.



Office of the District Engineer U.S. Army Engineer District, Far East Seoul, Korea

To the District team,

As we approach the end of 1991 and the beginning of a new year, I want to express my appreciation and admiration of your many contributions toward the success of this district over the past twelve months.

The role each of you play in "Building for Peace" to support our customers and partners is vital to the defense of the Korean peninsula. Be proud of your achievements.

I know that you will carry into 1992 the spirit of dedication and professionalism which has fostered the many successes of the district team.

Suna and I wish each of you every blessing of the holiday season and the new year.

Sincerely,

BARTHOLOMEW B. BOHN II
Colonel, Corps of Engineers
District Engineer

Comings & goings

Sergeant First Class Kenneth E. King has joined the district team as the Operations and Training NCO in Headquarters Detachment. He is serving there until May, when he will assume quality assurance duties at the Northern Resident Office.

An 18-year Army veteran, King hails from Muskegon, Mich. He comes to FED from Fort Campbell, Ky.

Captain David R. Goddard is another new arrival. He is assigned to project management in Construction Division, and will replace **Captain Jim Balocki** who leaves in January for Walla Walla Engineer District in Washington. Goddard was last assigned to Fort Carson, Colo.

Sergeant Carlos Rodriguez has joined Headquarters Detachment as mail clerk, replacing **Private 2 David M. Livingston, Jr.**, who transferred to 8th Personnel Command.

The Executive Office is getting some part

time clerical assistance from their new winter hire. She's **TeAnn Freeman**, a student at Seoul American High School.

Captain Charles R. Miller joined the Central Resident Office as a project engineer in November. His last assignment was as an engineer advisor for the U.S. Army Readiness Group at Fort Sill, Okla. Miller has an undergraduate degree in aeronautical engineering and a Masters Degree in Aviation Safety.

Farewell to **Sergeant First Class Freddie Shorts**, Kunsan Resident Office, who transferred to a troop assignment at Fort Polk, La.

Civilian **Dave Roden** left Engineering Division for a job at Seattle District. **Tom Hudspeth**, Kunsan Resident Engineer, transfers to Pacific Ocean Division in January. Hudspeth has been selected for promotion and assignment as the Hale Koa II project engineer.

News briefs

Corps contracting overview

Twenty-six military and civilian district employees received a three-day overview of the Corps of Engineers contracting process, Nov. 13-15. Harry Kim, chief of Contracting Division, presented the course, which was developed by the Corps of Engineers Nontraditional Exportable Training Branch of the Huntsville Division.

MRE menu changes

Food researchers at the U.S. Army Natick Research, Development and Engineering Center are improving the military's answer to fast food: Meals, Ready-to-Eat.

Changes already being made to the MRE include hot sauce with every packet, more commercial candy -- to include heat-stabilized chocolate and real wet-pack fruit. The next MRE iteration will include a flameless ration heater with every menu. **(American Forces Information Service)**

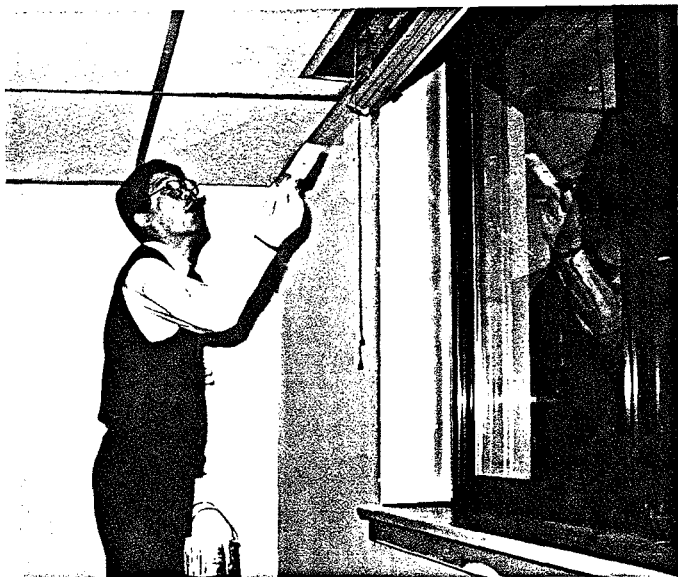
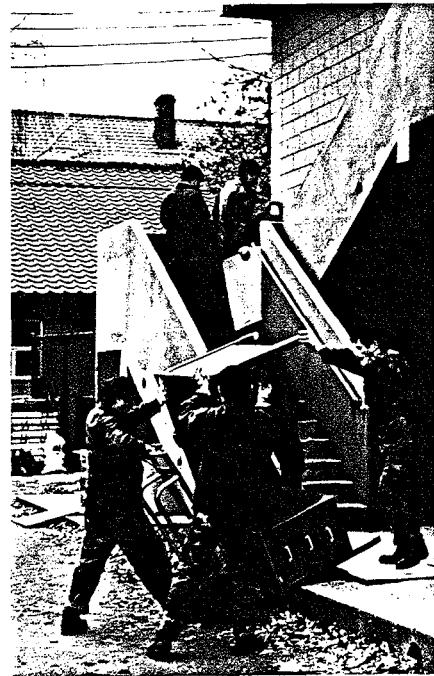
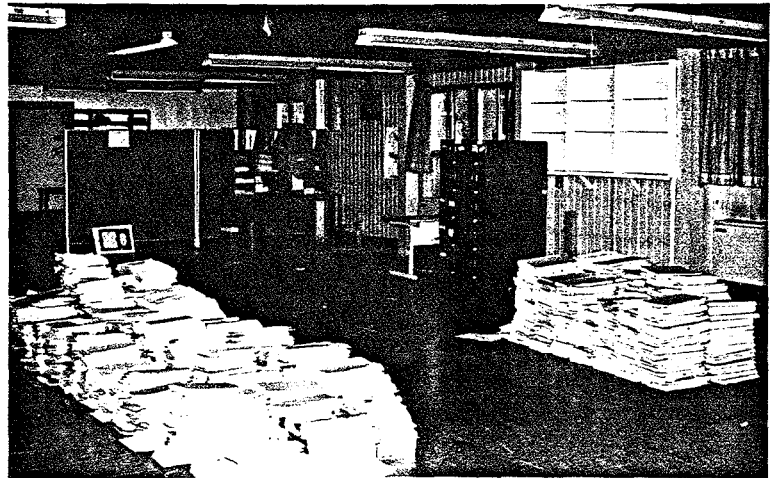
Vote the primaries

State primary elections in 1992 might not seem as important as November general elections, but it's wrong to think that way, DoD's voting officer said.

"Fewer people vote in the state primaries. What you end up having is a small percentage of the population making the decision on whose names will actually appear on the November ballot," said Henry Valentino, Federal Voting Assistance Program director.

The parties select most of their candidates for the Nov. 3 elections based on the primaries' results, explained Valentino. This is a time where an individual's vote can make a big difference, especially "if someone that you really want elected is running for office," he added. "This is your chance to let your party know what you want." **(American Forces Information Service)**

Construction Division consolidates space, gets self-help face lift



Photos by Yo, Kyong-II

New Year brings pay raise for general schedule employees

General Schedule

Effective Jan. 1, 1992

	1	2	3	4	5	6	7	8	9	10
GS 1	\$11,478	\$11,861	\$12,242	\$12,623	\$13,006	\$13,230	\$13,606	\$13,986	\$14,003	\$14,356
2	12,905	13,212	13,640	14,003	14,157	14,573	14,989	15,405	15,821	16,237
3	14,082	14,551	15,020	15,489	15,958	16,427	16,896	17,365	17,834	18,303
4	15,808	16,335	16,862	17,389	17,916	18,443	18,970	19,497	20,024	20,551
5	17,686	18,276	18,866	19,456	20,046	20,636	21,226	21,816	22,406	22,996
6	19,713	20,370	21,027	21,684	22,341	22,998	23,655	24,312	24,969	25,626
7	21,906	22,636	23,366	24,096	24,826	25,556	26,286	27,016	27,746	28,476
8	24,262	25,071	25,880	26,689	27,498	28,307	29,116	29,925	30,734	31,543
9	26,798	27,691	28,584	29,477	30,370	31,263	32,156	33,049	33,942	34,835
10	29,511	30,495	31,479	32,463	33,447	34,431	35,415	36,399	37,383	38,367
11	32,423	33,504	34,585	35,666	36,747	37,828	38,909	39,990	41,071	42,152
12	38,861	40,156	41,451	42,746	44,041	45,336	46,631	47,926	49,221	50,516
13	46,210	47,750	49,290	50,830	52,370	53,910	55,450	56,990	58,530	60,070
14	54,607	56,427	58,247	60,067	61,887	63,707	65,527	67,347	69,167	70,987
15	64,223	66,374	68,515	70,656	72,797	74,938	77,079	79,220	81,361	83,502

SENIOR LEVEL (SL)

Minimum	\$77,080
Maximum	112,100

SENIOR EXECUTIVE SERVICE

ES-1	\$90,000
ES-2	94,400
ES-3	98,600
ES-4	104,000
ES-5	108,300
ES-6	112,100

EXECUTIVE SCHEDULE

Level I	\$143,800
Level II	129,500
Level III	119,300
Level IV	112,100
Level V	104,800

OASD(FM&P)

Military pay hiked too

Active Duty
Monthly Basic Pay Table
Effective Jan. 1, 1992

Years of Service

	<2	2	3	4	6	8	10	12	14	16	18	20	22	26
Commissioned Officers														
O-10	6417.60	6643.50	6643.50	6643.50	6643.50	6898.20	6898.20	7280.40	7280.40	7801.20	7801.20	8323.50	8323.50	8842.20*
O-9	5687.70	5836.50	5961.00	5961.00	5961.00	6112.50	6112.50	6366.90	6366.90	6898.20	6898.20	7280.40	7280.40	7801.20
O-8	5151.60	5306.10	5431.80	5431.80	5431.80	5836.50	5836.50	6112.50	6112.50	6366.90	6643.50	6898.20	7068.30	7068.30
O-7	4280.40	4571.40	4571.40	4571.40	4776.60	4776.60	5053.50	5053.50	5306.10	5836.50	6238.20	6238.20	6238.20	6238.20
O-6	3172.80	3485.70	3714.30	3714.30	3714.30	3714.30	3714.30	3714.30	3840.30	4447.50	4674.60	4776.60	5053.50	5480.70
O-5	2537.40	2979.30	3185.40	3185.40	3185.40	3185.40	3281.70	3458.40	3690.30	3966.60	4193.70	4320.90	4471.80	4471.80
O-4	2138.70	2604.60	2778.30	2778.30	2829.90	2954.70	3156.30	3333.60	3485.70	3638.70	3739.20	3739.20	3739.20	3739.20
O-3	1987.50	2222.40	2375.70	2628.60	2754.30	2853.00	3007.50	3156.30	3233.70	3233.70	3233.70	3233.70	3233.70	3233.70
O-2	1733.10	1892.70	2274.30	2350.50	2399.40	2399.40	2399.40	2399.40	2399.40	2399.40	2399.40	2399.40	2399.40	2399.40
O-1	1504.80	1566.30	1892.70	1892.70	1892.70	1892.70	1892.70	1892.70	1892.70	1892.70	1892.70	1892.70	1892.70	1892.70
Commissioned Officers With Over Four Years Active Duty As An Enlisted Member Or Warrant Officer														
O-3E	0.00	0.00	0.00	2628.60	2754.30	2853.00	3007.50	3156.30	3281.70	3281.70	3281.70	3281.70	3281.70	3281.70
O-2E	0.00	0.00	0.00	2350.50	2399.40	2475.60	2604.60	2704.20	2778.30	2778.30	2778.30	2778.30	2778.30	2778.30
O-1E	0.00	0.00	0.00	1892.70	2022.30	2096.70	2172.60	2248.20	2350.50	2350.50	2350.50	2350.50	2350.50	2350.50
Warrant Officers														
W-5	0.00	0.00	0.00	0.00	0.00	0.00	0.00	0.00	0.00	0.00	0.00	3477.90	3587.10	3846.30
W-4	2025.00	2172.60	2172.60	2222.40	2323.20	2425.80	2527.50	2704.20	2829.90	2929.20	3007.50	3104.70	3208.50	3458.40
W-3	1840.50	1996.50	1996.50	2022.30	2045.70	2195.40	2323.20	2399.40	2475.60	2549.40	2628.60	2730.90	2829.90	2929.20
W-2	1611.90	1743.90	1743.90	1794.90	1892.70	1996.50	2072.10	2148.30	2222.40	2300.40	2375.70	2450.70	2549.40	2549.40
W-1	1342.80	1539.90	1539.90	1668.30	1743.90	1818.90	1892.70	1971.00	2045.70	2121.90	2195.40	2274.30	2274.30	2274.30
Enlisted Members														
E-9	0.00	0.00	0.00	0.00	0.00	0.00	2355.90	2408.70	2463.30	2519.70	2576.10	2626.20	2763.90	3032.70
E-8	0.00	0.00	0.00	0.00	0.00	1975.50	2031.90	2085.60	2139.60	2196.30	2246.70	2301.90	2436.90	2708.40
E-7	1379.10	1488.90	1544.10	1598.10	1652.40	1705.20	1759.80	1814.70	1896.90	1950.60	2004.90	2031.00	2167.20	2436.90
E-6	1186.80	1293.30	1347.30	1404.60	1457.10	1509.60	1565.10	1645.80	1697.40	1752.30	1779.00	1779.00	1779.00	1779.00
E-5	1041.30	1133.40	1188.60	1240.20	1321.80	1375.50	1430.10	1482.60	1509.60	1509.60	1509.60	1509.60	1509.60	1509.60
E-4	971.10	1025.70	1086.00	1170.00	1216.20	1216.20	1216.20	1216.20	1216.20	1216.20	1216.20	1216.20	1216.20	1216.20
E-3	915.00	965.40	1003.80	1043.40	1043.40	1043.40	1043.40	1043.40	1043.40	1043.40	1043.40	1043.40	1043.40	1043.40
E-2	880.50	880.50	880.50	880.50	880.50	880.50	880.50	880.50	880.50	880.50	880.50	880.50	880.50	880.50
E-1**	785.70	785.70	785.70	785.70	785.70	785.70	785.70	785.70	785.70	785.70	785.70	785.70	785.70	785.70
E-1***	726.60	0.00	0.00	0.00	0.00	0.00	0.00	0.00	0.00	0.00	0.00	0.00	0.00	0.00

*Basic pay is limited to \$8,733.30 by Level V of the Executive Schedule OASD(FM&P)MM&PP(C)
 **More than four months
 ***Less than four months

OASD(FM&P)

The Far East District Employee Newsletter is an authorized publication for members of the Far East District, U.S. Army Corps of Engineers. Contents of this publication are not necessarily official views of, or endorsed by, the U.S. Government, Department of Defense, Department of the Army, or the U.S. Army Corps of Engineers. It is published at least monthly by desktop publishing by the Public Affairs Office, Far East District, U.S. Army Corps of Engineers, APO AP 96205-0601, telephone 721-7501. Printed circulation: 240

District Commander: **Col. Bartholomew B. Bohn II**

Public Affairs Officer: **Jeanne M. Maxon**